



**Corpi standardizzati, cavità SAE  
Standard body, SAE cavity**

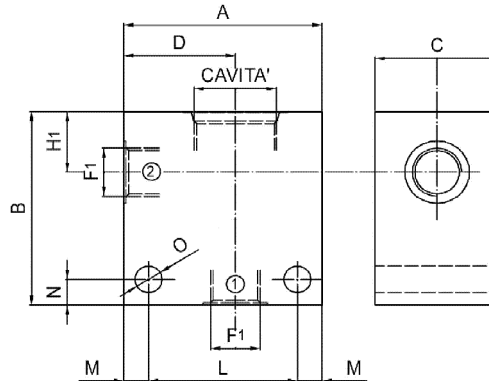
Rev.05-2019/03

**Corpi con cavità SAE 2 VIE - Body with 2 WAY SAE cavity**

**Caratteristiche - features:**

Materiale standard: alluminio UNI 9007/1  
(su richiesta: acciaio UNI CF 9 SMnPb 36)  
Standard material: aluminium UNI 9007/1  
(on request: steel UNI CF 9 SMnPb 36)

Pressione max: 250 bar per alluminio,  
350 bar per acciaio  
Max. pressure: 250 bar for aluminium;  
350 bar for steel



CAVITA' CAVITY	CODICE CAVITA' CAVITY CODE	A	B	C	D	F1	H1	L	M	N	O	CODICE ORDINAZIONE BLOCCO BODY ORDER CODE
SAE 08	23081	50	50	30	29,5	1/4"bspp	14,5	38	6	7	7	23081-G1/4-*1
SAE 08	23081	50	50	30	29,5	3/8"bspp	14,5	38	6	7	7	23081-G3/8-*1
SAE 10	23101	60	56	35	35	3/8"bspp	18	48	6	7	7	23101-G3/8-*1
SAE 10	23101	60	56	35	35	1/2"bspp	18	48	6	7	7	23101-G1/2-*1
SAE 12	23121	70	70	40	40	1/2"bspp	25,5	54	8	8	9	23121-G1/2-*1
SAE 12	23121	70	70	40	40	3/4"bspp	25,5	54	8	8	9	23121-G3/4-*1
SAE 16	23161	80	80	50	45	3/4"bspp	25	60	10	10,5	11	23161-G3/4-*1
3/4"bspp	21261	60	70	40	35	1/2"bspp	23	48	6	7	7	21261-G1/2-*1
3/4"bspp	21261	80	70	40	40	3/4"bspp	23	58	6	7	7	21261-G3/4-*1
1"bspp	21331	80	90	50	43	3/4"bspp	28,5	64	8	8	9	21331-G3/4-*1
1"bspp	21331	90	90	50	53	1"bspp	28,5	74	8	8	9	21331-G1-*1

Alluminio/Aluminium = A

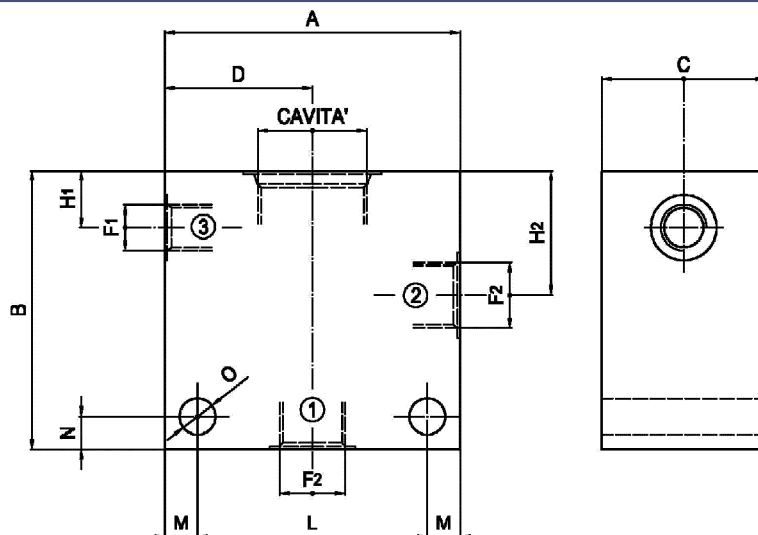
\* ————— Acciaio/Steel = S

**Corpi con cavità SAE 3 VIE CORTA - Body with 3 WAY SAE cavity (short)**

**Caratteristiche - features:**

Materiale standard: alluminio UNI 9007/1  
(su richiesta: acciaio UNI CF 9 SMnPb 36)  
Standard material: aluminium UNI 9007/1  
(on request: steel UNI CF 9 SMnPb 36)

Pressione max: 250 bar per alluminio,  
350 bar per acciaio  
Max. pressure: 250 bar for aluminium;  
350 bar for steel



CAVITA' CAVITY	CODICE CAVITA' CAVITY CODE	A	B	C	D	F1	F2	H1	H2	L	M	N	O	CODICE ORDINAZIONE BLOCCO BODY ORDER CODE
SAE 08	33082	60	60	30	30	1/4"bspp	1/4"bspp	12,5	27	46	7	12	7	33082-G1/4-*1
SAE 10	33102	60	65	35	30	1/4"bspp	3/8"bspp	14	32	48	6	7	7	33102-G3/8-*1
SAE 12	33122	80	90	40	40	1/4"bspp	1/2"bspp	22,5	41	64	8	8	9	33122-G1/2-*1
SAE 16	33162	90	85	50	45	1/4"bspp	3/4"bspp	17,5	38,5	70	10	10	11	33162-G3/4-*1

Alluminio/Aluminium = A

\* ————— Acciaio/Steel = S