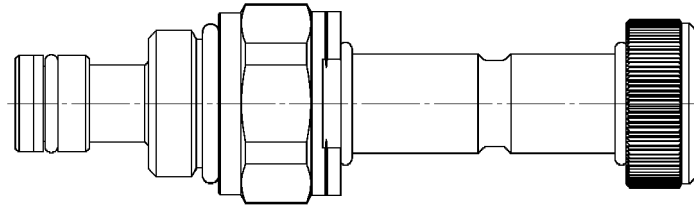
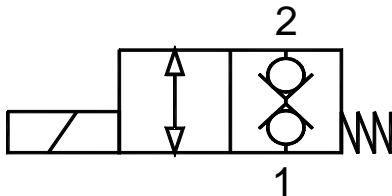


**Valvola elettrica 2 vie, diretta, normalmente chiusa**  
**2 way, direct operated electric valve, normally closed**

Rev.03-2019/07

**SPECIFICHE TECNICHE**

**Materiali:** cartuccia in acciaio zincato. Componenti interni in acciaio trattato termicamente.

**Campo di portata:** 15 L/min;

**Pressione max.:** 310 bar (Bobina 20 W)

**Coppia di serraggio in cavità:** vedere pag.2

**Cavità:** vedere sezione X

**Peso cartuccia:** vedere pagina 2

**Bobine:** versione C-13, vedere sezione Y

**Temperatura olio:** -20°C + 80°C

**Temperatura ambiente:** -30°C + 60°C

**Filtrazione consigliata:** nominale max. 10µ, ISO 4406-19/17/14 (NAS8) o minore

La variazione di voltaggio in ingresso non deve eccedere il ±10% del valore nominale.

**TECHNICAL SPECIFICATIONS**

**Materials:** cartridge in steel zinc plated, internal parts in hardened steel.

**Flow range:** 15 L/min;

**Max. pressure:** 310 bar (Coil 20 W)

**Installation torque:** see page 2

**Cavity:** see section X

**Cartridge weight:** see page 2

**Coils:** version C-13, see section Y

**Oil temperature:** -20°C + 80°C

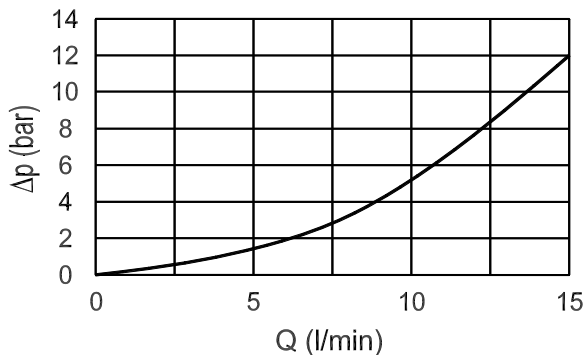
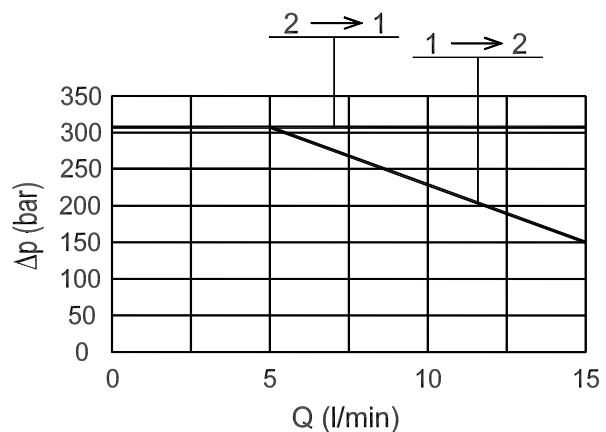
**Environment temperature:** -30°C + 60°C

**Recommended filtration:** nominal max. 10µ, ISO 4406-19/17/14 (NAS8) or less.

Inlet voltage fluctuations must not exceed ±10% of nominal voltage.

**DIAGRAMMA PERDITE DI CARICO**  
**PRESSURE DROP CURVES**

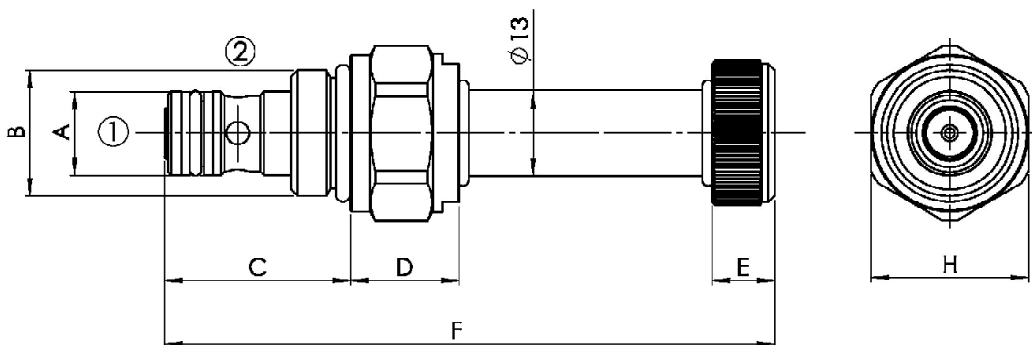
Valvola aperta (bobina eccitata) 2 → 1  
Valve open (energized coil) 1 → 2

**LIMITI DI FUNZIONAMENTO**  
**PERFORMANCE LIMITS**

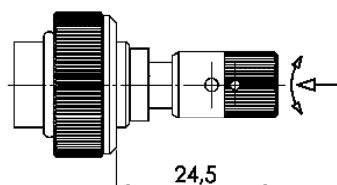


**Valvola elettrica 2 vie, diretta, normalmente chiusa**  
**2 way, direct operated electric valve, normally closed**

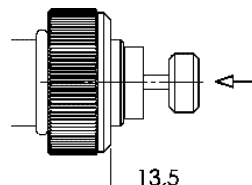
Rev.03-2019/07



**Emergenza "B" (spingi e gira)**  
**Manual override "B" (push and twist)**



**Emergenza "P" (spinta)**  
**Manual override "P" (push)**



TIPO TYPE	A	B	C	D	E	F	H	CAVITA' CAVITY	COPPIA DI SERRAGGIO INSTALLATION TORQUE	PESO WEIGHT
	mm	SAE	mm	mm	mm	mm	mm		Nm	Kg
FP-22-SD-S08-04	12.7	3/4"-16 UNF-2A	27.5	16.5	9.5	92	24	23081	35 – 45	0.130
FP-22-SD-S08-04-S	12.7	3/4"-16 UNF-2A	27.5	16.5	9.5	92	24	23081	35 – 45	0.140

Per i corpi in cavità SAE a 2 vie, vedere pagina catalogo generale W 150/1  
 For 2 way SAE cavity bodies, see page W 150/1 in technical catalogue

**ESEMPIO DI ORDINAZIONE - ORDERING CODE EXAMPLE**

**F P 2 2 S D S 0 8 0 4 \* \***

Guarnizioni . Seals: V=Viton \*  
 Omettere se BUNA-N . Omit if BUNA-N  
 Emergenza . Manual override  
 P = spinta - push \*  
 B = spinta e giro . push and twist  
 Omettere se non richiesta . Omit if not required