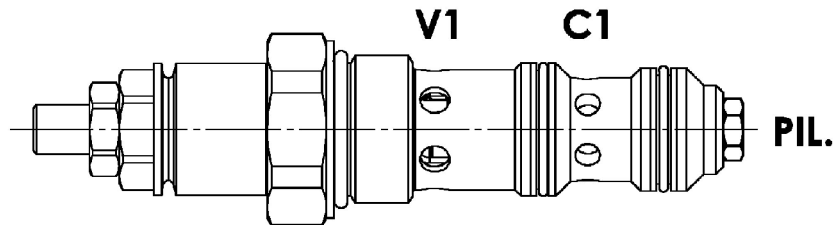
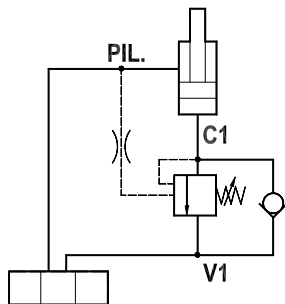




Valvola overcenter, versione a cartuccia, cavità 1 3/16"-12 unf
Overcenter valve, cartridge version, cavity 1 3/16"-12 unf

Rev.06-2022/08



SPECIFICHE TECNICHE

Materiali: corpo in acciaio, protetto mediante zincatura. I componenti interni sono in acciaio trattato termicamente.

Portata: 90 l/min

Taratura max.: 350 bar

Rapporto di pilotaggio: 1 : 4.2 (a richiesta 1 : 8)

Regolazione pressione: mediante vite

Campo di regolazione pressione: vedere pag. 02

TECHNICAL SPECIFICATIONS

Materials: body is steel made. Internal parts are in hardened steel.
External surface: zinc plated.

Rated flow: up to 90 l/min

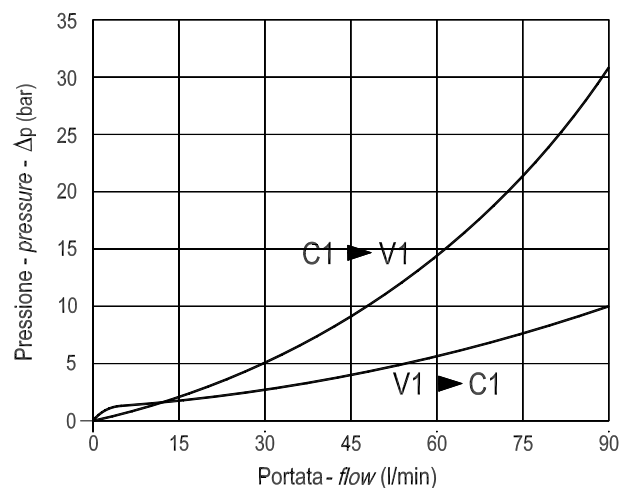
Max. setting: 350 bar

Pilot ratio: 1 : 4.2 (1 : 8 on request)

Adjustment means: leakproof screw adjustment

Adjustable pressure range: see page 02

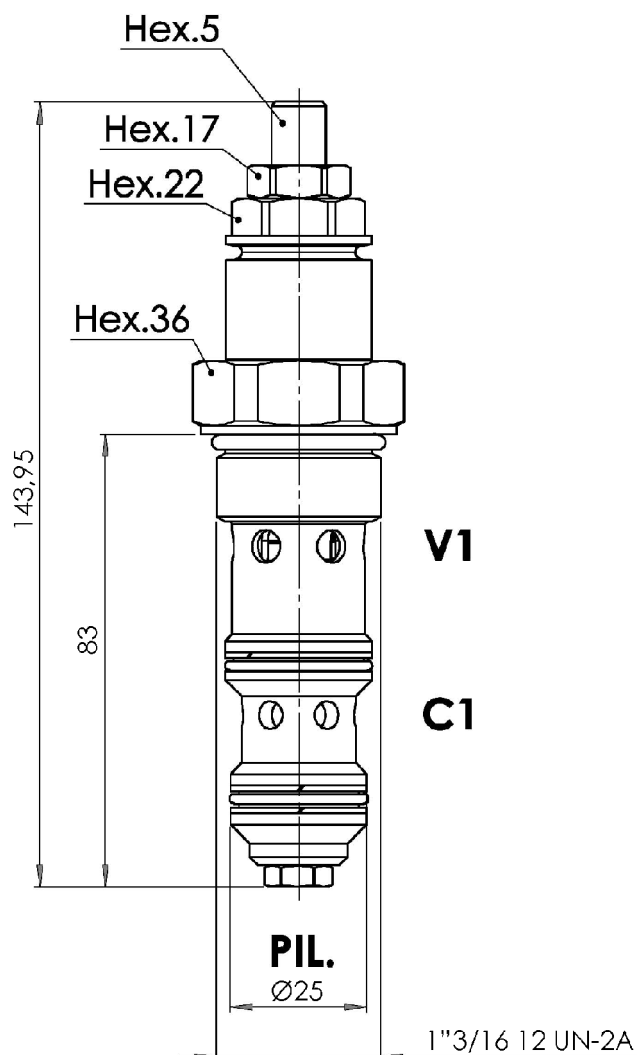
DIAGRAMMA PERDITE DI CARICO PRESSURE DROP CURVES





Valvola overcenter, versione a cartuccia, cavità 1 3/16"-12 unf
Overcenter valve, cartridge version, cavity 1 3/16"-12 unf

Rev.06-2022/08



MOLLE - SPRINGS				*
Codice Code	Rapp. pil. Pilot ratio	Campo taratura min.-max. bar Adjustable pressure range bar	Incrim. press. bar/giro vite Pressure increase bar/turn	Taratura standard bar Standard setting bar
20	1 : 4.2	60 - 210	35	170
	1 : 8	60 - 220	42	170
35	1 : 4.2	100 - 350	88	280
	1 : 8	200 - 450	164	350

TIPO TYPE	RAPP. DI PILOTAGGIO PILOT RATIO	CAVITA' CAVITY	COPPIA DI SERRAGGIO INSTALLATION TORQUE	PESO WEIGHT
			Nm	Kg
FPO 90 C	1 : 4.2 (standard) - 1 : 8	33141	90 - 100	0.500

ESEMPIO DI ORDINAZIONE - ORDERING CODE EXAMPLE

F P O **9 0** **C** **2 0** **B**

Rapporto di pilotaggio . *Pilot ratio*
 Omettere se standard . *Omit if standard* *

B = 1 : 8

~~20~~ / ~~35~~ *

Campi di taratura pressione . *Adjustable pressure range*