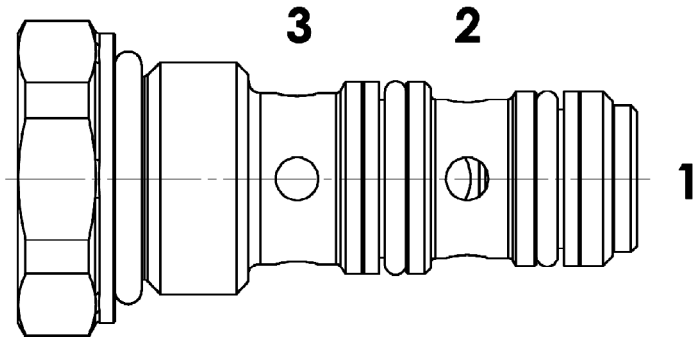
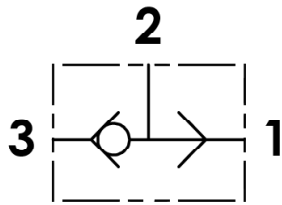




**Valvola di commutazione, versione a cartuccia, cavità SAE**  
**Shuttle valve, cartridge version, SAE cavity**

Rev.00-2021/03

**SPECIFICHE TECNICHE**

**Materiali:** corpo in acciaio. La sfera è in acciaio trattato termicamente.

**Portata max.:** SAE08 = 20l/min; SAE10 = 50 l/min

**Pressione max.:** 350bar

**TECHNICAL SPECIFICATIONS**

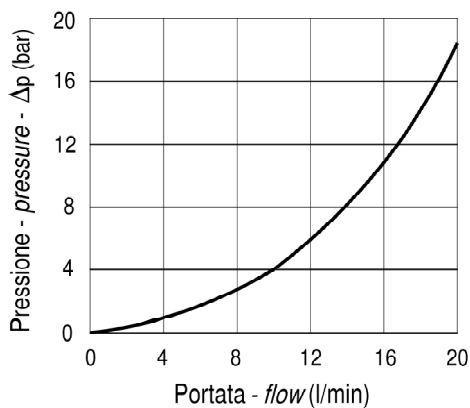
**Materials:** body is steel made. Ball is in hardened steel.

**Rated flow:** SAE08 = 20l/min; SAE10 = 50 l/min

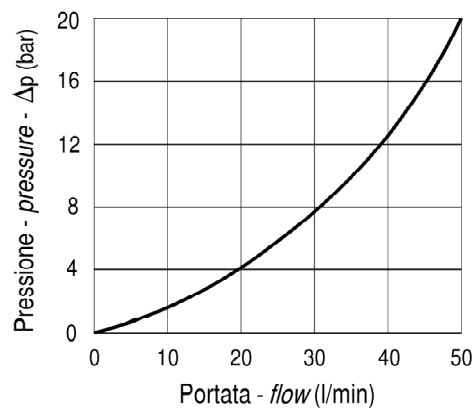
**Max. pressure:** 350 bar

**DIAGRAMMA PERDITE DI CARICO**  
**PRESSURE DROP CURVES**

SAE08



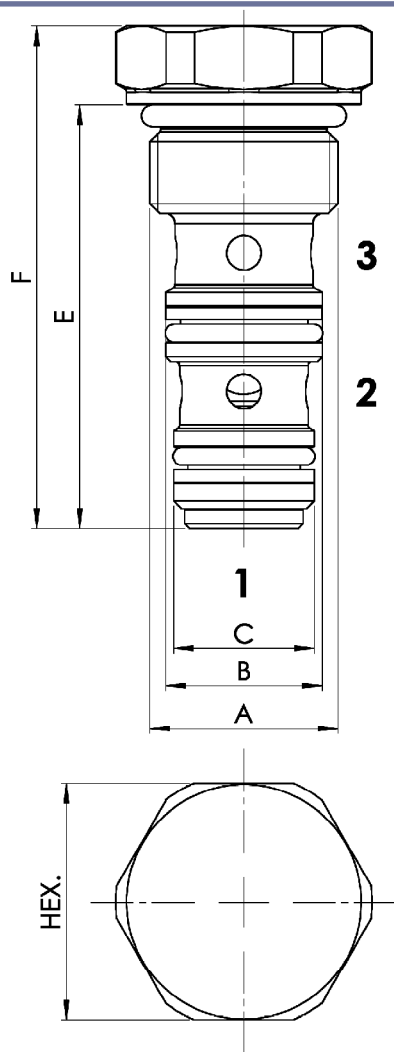
SAE10





**Valvola di commutazione, versione a cartuccia, cavità SAE**  
**Shuttle valve, cartridge version, SAE cavity**

Rev.00-2021/03



TIPO TYPE	PORTATA MAX. MAX FLOW L/MIN	A UNF-2B	B mm	C mm	E mm	F mm	HEX. mm	CAVITA' CAVITY	COPPIA DI SERRAGGIO INSTALLATION TORQUE Nm	PESO WEIGHT Kg
FPT-C-SAE08	20	3/4"-16	15.87	14.27	43	51	24	33081	40-45	0.008
FPT-C-SAE10	50	7/8"-14	17.47	15.87	48.5	57	27	33101	60-70	0.011

**ESEMPIO DI ORDINAZIONE - ORDERING CODE EXAMPLE**

**F P T** **C** \* \*

S08 . 3/4+16 UNF-2B  
 \* S10 . 7/8+14 UNF-2B  
 Dimensione - Dimension

Guarnizioni . Seals:  
 V=Viton \*  
 Omettere se BUNA-N . Omit if BUNA-N