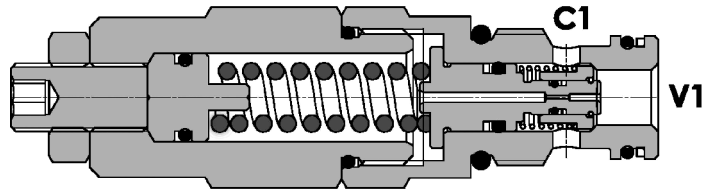
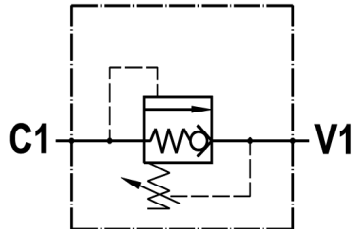




Valvola di sequenza ad area differenziale con ritorno libero, a cartuccia
Differential piston sequence valve, free reverse flow, cartridge version

Rev.04-2022/05

**SPECIFICHE TECNICHE**

Materiali: cartuccia in acciaio zincato, parti interne in acciaio trattato termicamente.

Portata: 25 l/min

Taratura max.: 350 bar

Pressione max.: 350 bar

Regolazione pressione: mediante vite

Cavità: 22205 (vedere sez. X)

Peso: 0,250 Kg

TECHNICAL SPECIFICATIONS

Materials: cartridge in steel zinc plated, internal parts are in hardened steel.

Rated flow: 25 l/min

Max. setting: 350 bar

Max. pressure: 350 bar

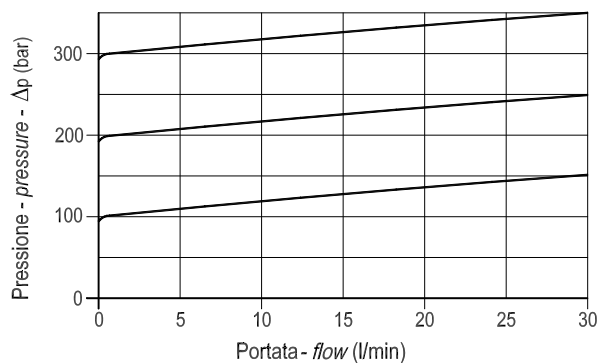
Adjustment means: leakproof screw

Cavity: 22205 (see section X)

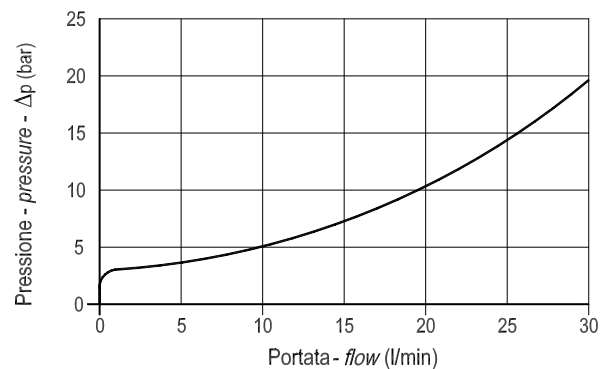
Weight: 0,250 Kg

DIAGRAMMA PERDITE DI CARICO
PRESSURE DROP CURVES

C1 ► V1



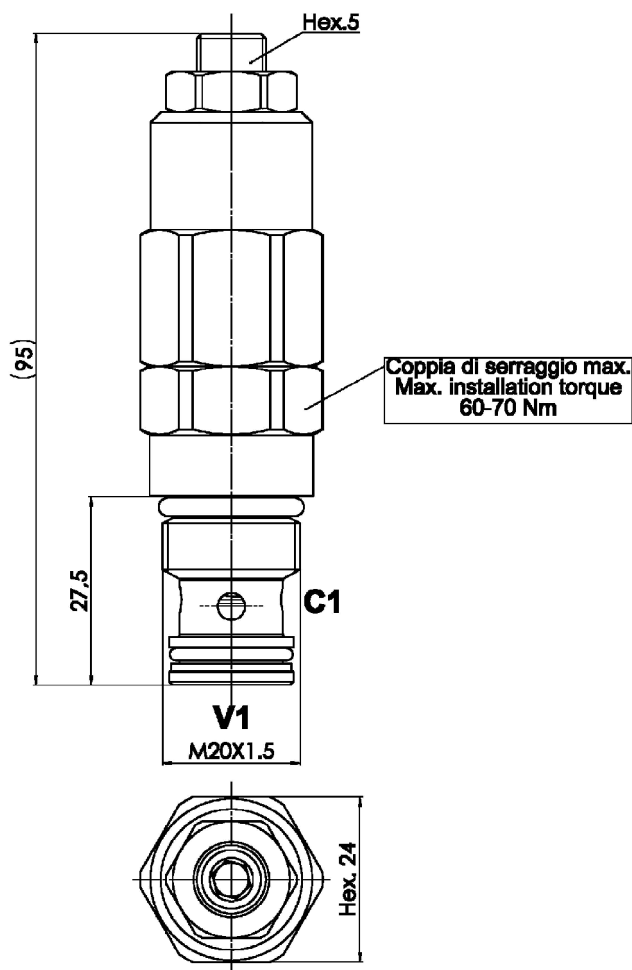
V1 ► C1





Valvola di sequenza ad area differenziale con ritorno libero, a cartuccia
Differential piston sequence valve, free reverse flow, cartridge version

Rev.04-2022/05



| MOLLE - SPRINGS | | | | * |
|-----------------|------------------------------------------------------------------------|------------------------------------------------------------------------|--------------------------------------------------------|-----------------|
| Codice Code | Campo taratura min.-max. bar Adjustable pressure range bar | Increment. press. bar/giro vite Pressure increase bar/turn | Taratura standard bar Standard setting bar | Colore Color |
| 10 | 30-120 | 20 | 30 | / |
| 35 | 100 - 350 | 110 | 100 | / |

ESEMPIO DI ORDINAZIONE - ORDERING CODE EXAMPLE

F P S Q A 2 5 C P 1 0

%0+ / %5+
 Campi di taratura pressione *
 Adjustable pressure range