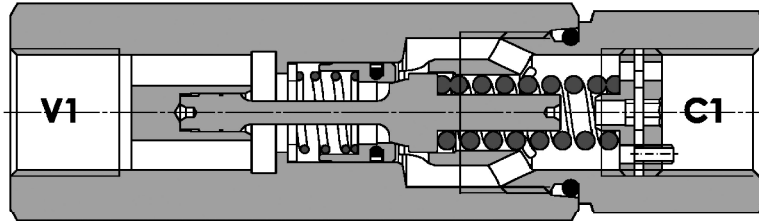
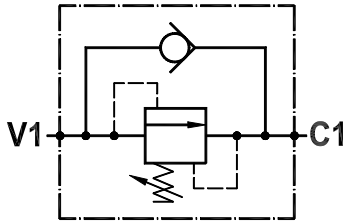




**Valvola di sequenza ad azione diretta, taratura regolabile, montaggio in linea**  
**Direct acting, sequence valve, adjustable setting, line mounted**

Rev.04-2020/10

**SPECIFICHE TECNICHE**

**Materiali:** corpo in acciaio zincato, parti interne in acciaio trattato termicamente.

**Portata:** 80 l/min

**Taratura max.:** 160 bar

**Pressione max.:** 350 bar

**Peso:** 0,420 Kg

**TECHNICAL SPECIFICATIONS**

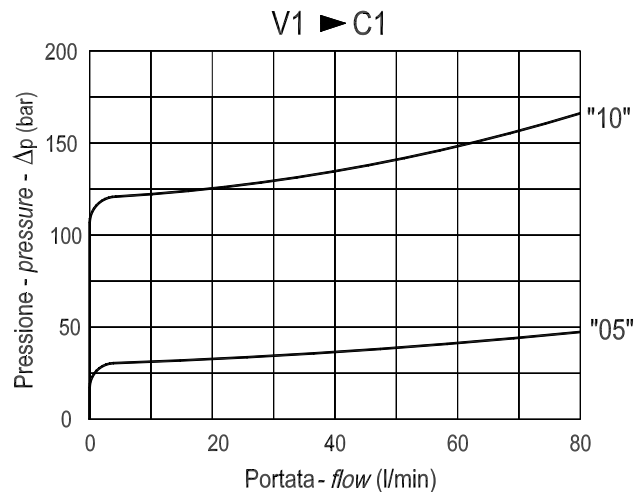
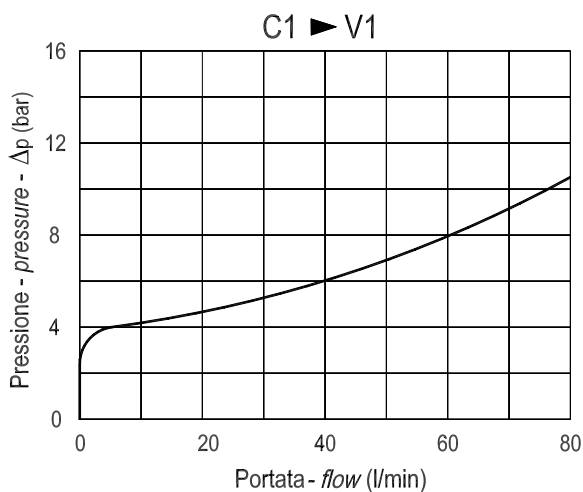
**Materials:** body in steel zinc plated, internal parts are in hardened steel.

**Rated flow:** 80 l/min

**Max. setting:** 160 bar

**Max. pressure:** 350 bar

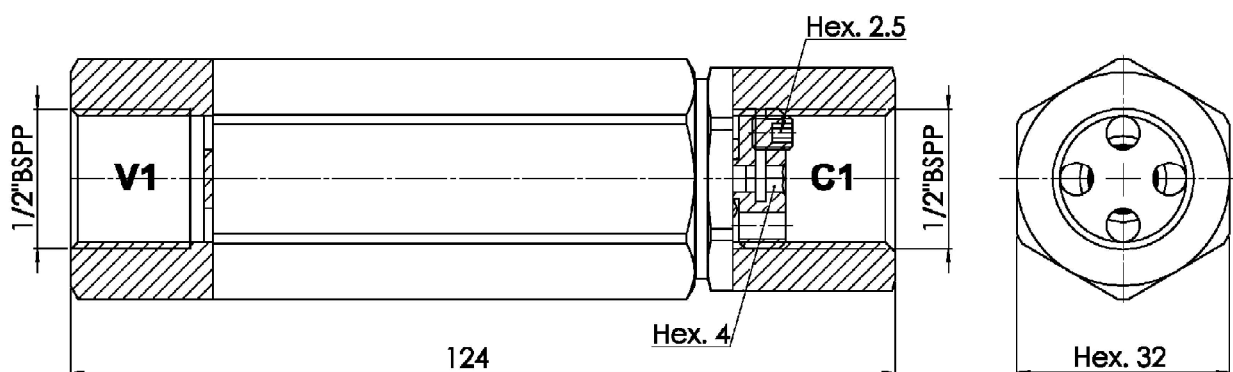
**Weight:** 0,420 Kg

**DIAGRAMMA PERDITE DI CARICO**  
**PRESSURE DROP CURVES**



**Valvola di sequenza ad azione diretta, taratura regolabile, montaggio in linea**  
**Direct acting, sequence valve, adjustable setting, line mounted**

Rev.04-2020/10



MOLLE - SPRINGS				*
Codice Code	Campo taratura min.-max. bar Adjustable pressure range bar	Increment. press. bar/giro vite Pressure increase bar/turn	Taratura standard bar Standard setting bar	Colore Color
05	05 - 30	15	05	Verde Green
10	30 - 120	60	30	Rosso Red
20	60 - 160	70	60	-

**ESEMPIO DI ORDINAZIONE - ORDERING CODE EXAMPLE**

**F P S Q R** **L** **D** **1 / 2** **0 5**

05+ / 00+  
 Campi di taratura pressione \*  
 Adjustable pressure range